



**BROTHERS**<sup>®</sup>  
PHARMAMACH (INDIA) PVT. LTD.

# VIALWASH 240R



## SPECIAL FEATURES :

- 36 Jets for 6 Internal washing zones
- 4 External Washing Station
- All contact parts made of SS 316 Material
- Machine construction in SS 304 Material
- 20 Cassette of Grippers each having 3 Grippers
- Suitable for 2ml to 50ml size
- Washing sequence can be made as per customers requirements.
- Optionally available 2 Pumps and 2 Tanks
- Each washing zone with independent circuit to avoid contamination
- Automatic In-feed and Exit of Vials

## UTILITY REQUIREMENT :

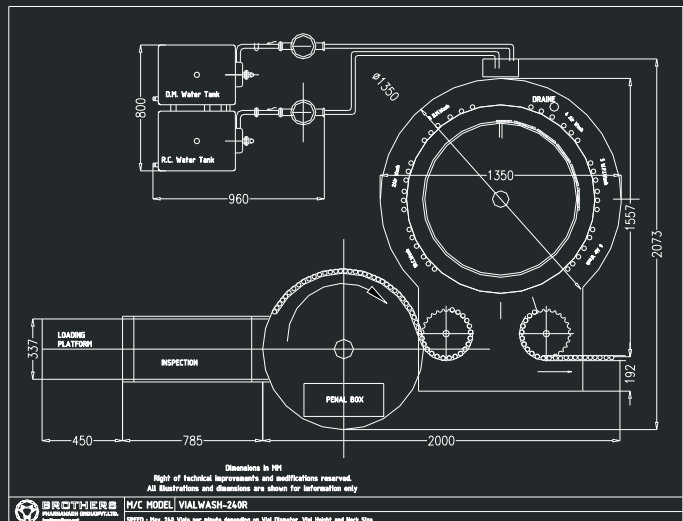
Filtered Compressed Air : 5 to 7 Bar Air Pressure  
Electrical : 415 VAC 3 Phase 50Hz and 220 VAC Single Phase Power Supply (50/60 Hz)  
Power : 5 Hp  
Customer also required to provide Water / D.M. Water etc. and also Line connection up to Machine tank

\* Specification can be changed as per customers requirements

## Automatic Rotary Vial Washing Machine

The Automatic Rotary Vial Washing Machine Model VIALWASH-240R is specially designed to wash Vial with minimum contact of machine parts with Vials. Machine with specially designed Gripper system holds the vial from Neck and invert the vials till the washing operation completed and again after washing release the vial on out-feed Star wheel system in vertical position ensures positive wash of vials. Machine is suitable for 2ml to 50ml Vials with the help of change parts, In special design it can be used for 100ml Vial Size also. Vial feeds through Turn Table to In-feed Star Wheel and specially designed Gripper hold the Vial from neck and invert the vial and move it further on rotary moving system for Washing process.

Machine suitable for application in Pharmaceutical Industries, The Vials traveling in neck down position above Washing Needles and moves along with the Needle bar ensures maximum time for washing once the needle enters in the vial neck. Machine with Standard Six Different Washing Stations each of 3 Needles for optimum Washing and the sequence can be change as per customers requirement. Machine also having external wash for optimum washing of Vials.



## TECHNICAL SPECIFICATIONS :

- Suitable for : 2ml to 50ml\* Vials with the help of change parts
- Type of Washing : Rotary Continuous Motion Washing
- Vial Diameter : 14 mm to 52 mm Maximum
- Vial Height : 32 mm to 105 mm Maximum
- Air Consumption : 20 CFM
- Water Consumption : 400 to 550 Litre per hour depending on Vial Size
- Washing Zone: Six zone can be set as per required sequence
- Water Tank & Pump : 2nos. Each with 50 Ltrs. Capacity & Centrifugal pump
- Speed : Max. 240 Vials per minute depending on Vial Size
- Conveyor Height : 875-950 mm
- Overall Dimensions : 3250 mm (L) x 2200 mm (W) x 1575 mm (H)

## Other Available Models

- VIALWASH-240 VIALWASH-120 VIALWASH-60.Ext VIALWASH-120R

Email : sales@brothers.in  
Export : sales1@brothers.in

Phone : +91 79 40213213 / 25831346

www.brothersindia.com